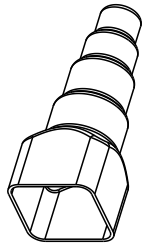
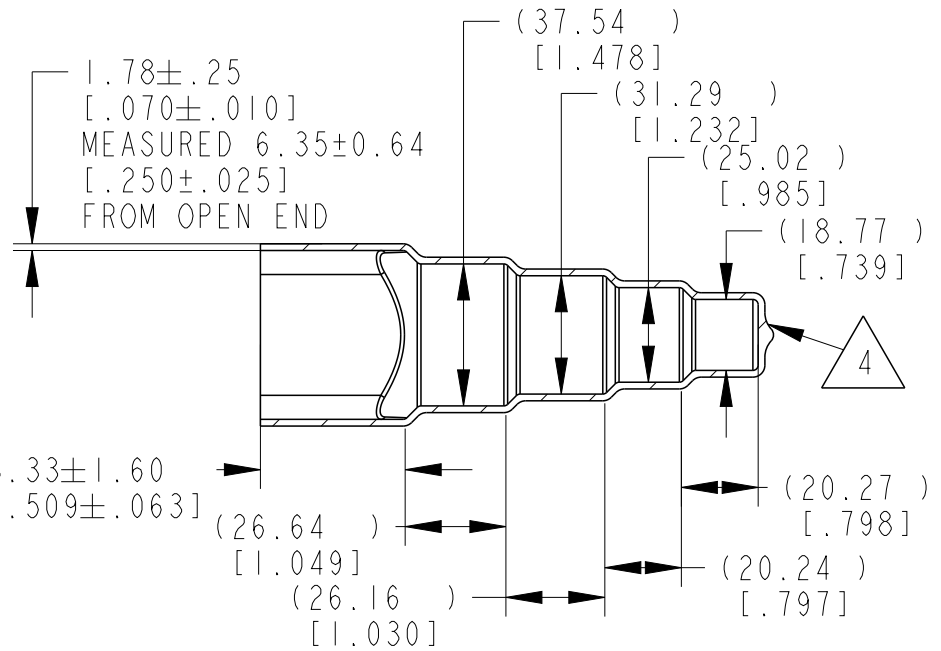
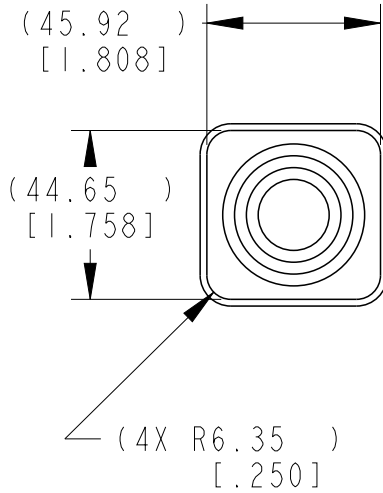


REVISIONS

| P | LTR | DESCRIPTION                   | DATE      | DWN | APVD |
|---|-----|-------------------------------|-----------|-----|------|
|   | A   | NEW RELEASE PER ECO-14-009835 | 01JUL2014 | DM  | DM   |
|   | A1  | REVISED PER PCN E-18-005298   | 27MAR2018 | SM  | DM   |
|   | A2  | REVISED PER PCN E-20-005053   | 03APR2020 | AP  | IG   |



3D VIEW



5. SMALL NON-FILLS ARE ACCEPTABLE INSIDE OF PART, INCLUDING SUPPLIER MARKING.

4. SMALL MATERIAL EXTENSION IS ACCEPTABLE ON THIS END ALL AROUND. WALL THICKNESS ON THIS END MAY VARY.

3. THIS ACCESSORY PART IS PROVIDED WITHOUT TYPICAL TRANSPORTATION INDUSTRY PROCESS CONTROLS. NO VALIDATION TESTING HAS BEEN PERFORMED. CUSTOMER IS RESPONSIBLE FOR DETERMINING PRODUCT PERFORMANCE AND SUITABILITY FOR APPLICATION.

2. TEMPERATURE RATING: -29°C TO +100°C [-20°F TO +212°F]

1. THIS PART IS USED ON  
AEC14-40PX(E)-XXXX RECEPTACLE  
AEC16-40SX(E)-XXXX PLUG  
WHERE X=A,B,C,D KEYS AND XXXX=MODIFICATION

NOTES:

|                    |                 |
|--------------------|-----------------|
| TE INTERNAL PN     | DEUTSCH PN      |
| YAEC40-BT-STPDWN-0 | AEC40-BT-STPDWN |

THIS DRAWING IS UNPUBLISHED. ALL RIGHTS RESERVED. BY TE CONNECTIVITY. COPYRIGHT 2014

|  |             |                    |           |
|--|-------------|--------------------|-----------|
| DIMENSIONS:<br>MM [INCH]               |             | DWN<br>D. MEYER    | 01JUL2014 |
| TOLERANCES UNLESS OTHERWISE SPECIFIED: |             | CHK<br>D. HASIBUAN | 01JUL2014 |
| 0 PLC                                  | ±           | APVD<br>D. MEYER   | 01JUL2014 |
| 1 PLC                                  | ±           | PRODUCT SPEC       |           |
| 2 PLC                                  | ±0.63[.025] | APPLICATION SPEC   |           |
| 3 PLC                                  | ±           |                    |           |
| 4 PLC                                  | ±           |                    |           |
| ANGLES                                 | ±5°         |                    |           |

|  |           |                   |               |
|--|-----------|-------------------|---------------|
| MATERIAL   | PVC       | FINISH            | BLACK         |
| <b>TE</b> TE Connectivity                          |           |                   |               |
| NAME<br>BOOT, RECEPTACLE/PLUG, SMALL<br>DRB SERIES |           |                   |               |
| SIZE   | CAGE CODE | DRAWING NO        | RESTRICTED TO |
| A 4  | 4AFU8     | ©-AEC40-BT-STPDWN |               |
| WEIGHT   |           | 57.38 G           |               |
| CUSTOMER DRAWING                                   |           |                   |               |

|       |  |     |       |  |   |    |   |     |    |
|-------|--|-----|-------|--|---|----|---|-----|----|
| SCALE |  | 1:2 | SHEET |  | 1 | OF | 1 | REV | A2 |
|-------|--|-----|-------|--|---|----|---|-----|----|